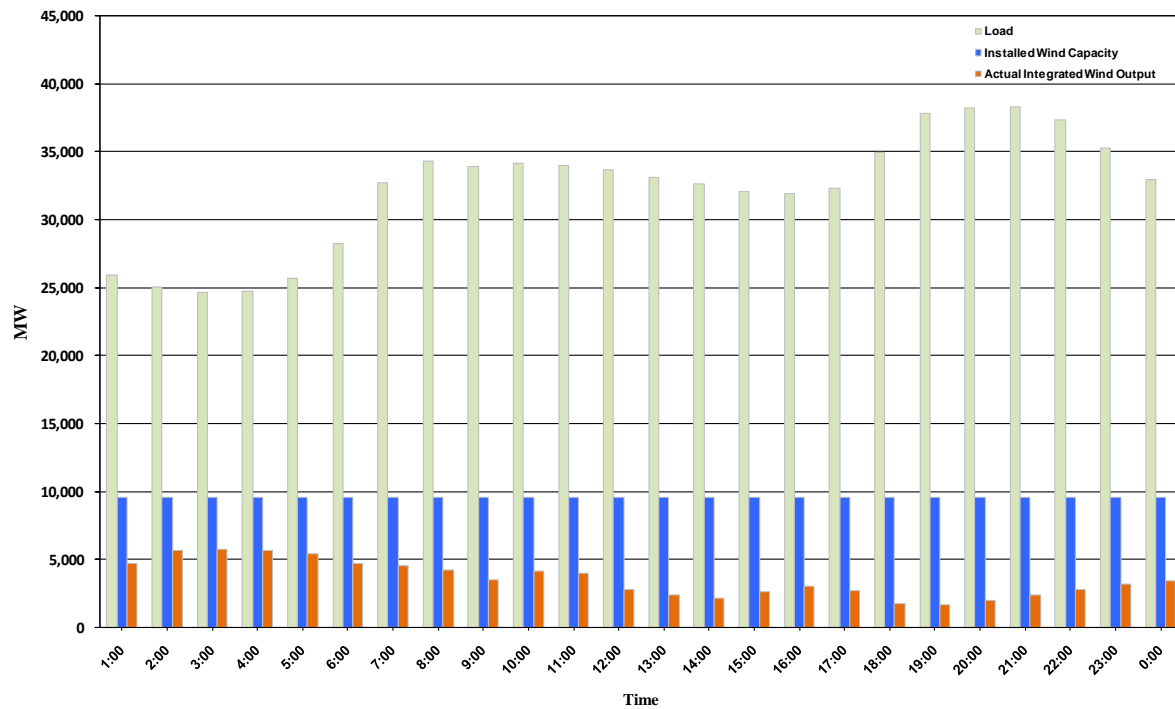




ERCOT Grid Operations Wind Integration Report: 11/30/10

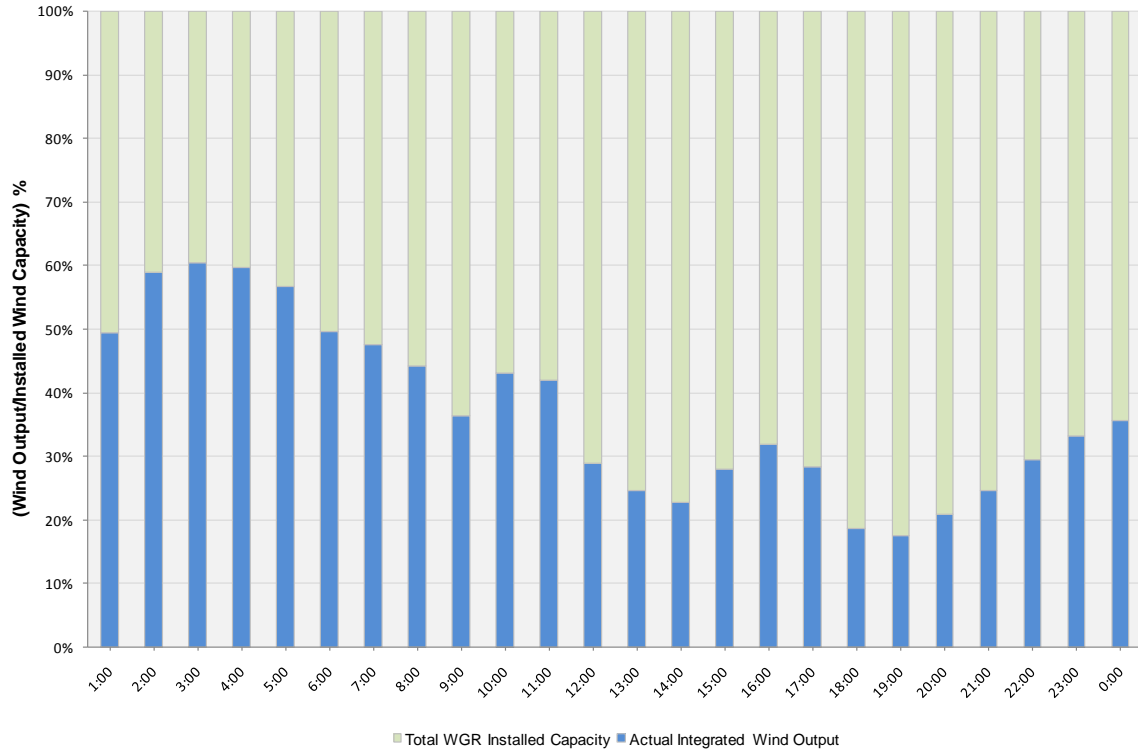
Peak Load	38,327 MW
Load Peak Hour	21
Wind Record 06/12/10	7016 MW
Max Wind value	6037 MW
Wind Peak Hour	01:50:12
Wind Integration %	24.33

Hourly Average Actual Load vs. Actual Wind Output
11-30-2010

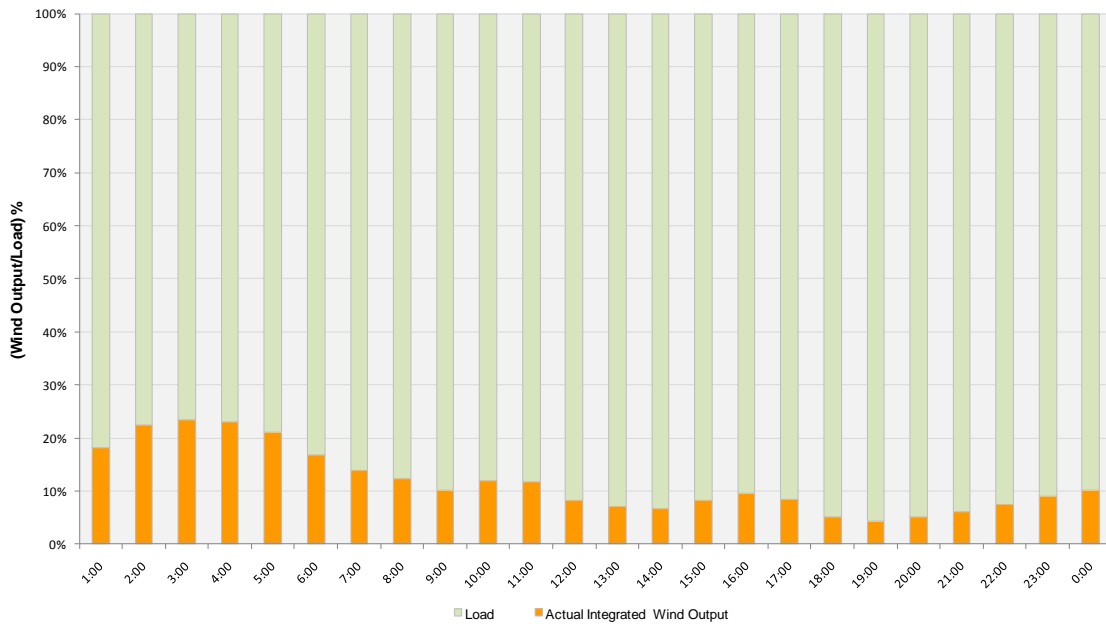




Actual Wind Output as a Percentage of the Total Installed Wind Capacity
11-30-2010



Actual Wind Output as a Percentage of the ERCOT Load
11-30-2010





ERCOT Load vs. Actual Wind Output 11/23/10 - 11/30/10

